

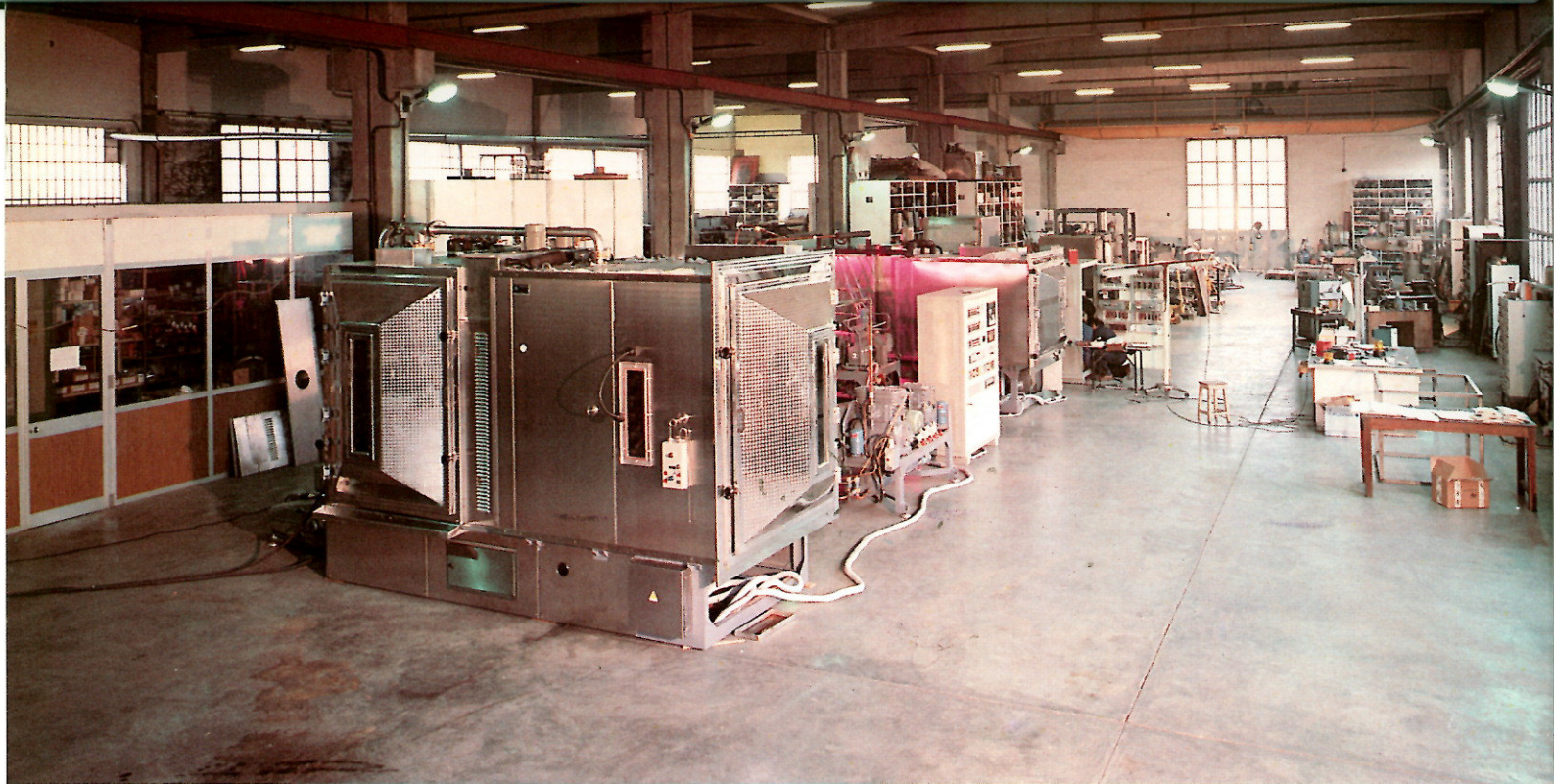


Sede, stabilimento, uffici
amministrativi e tecnici
*Factory, administrative
and technical offices*



Crioфарма

TORINO - ITALY

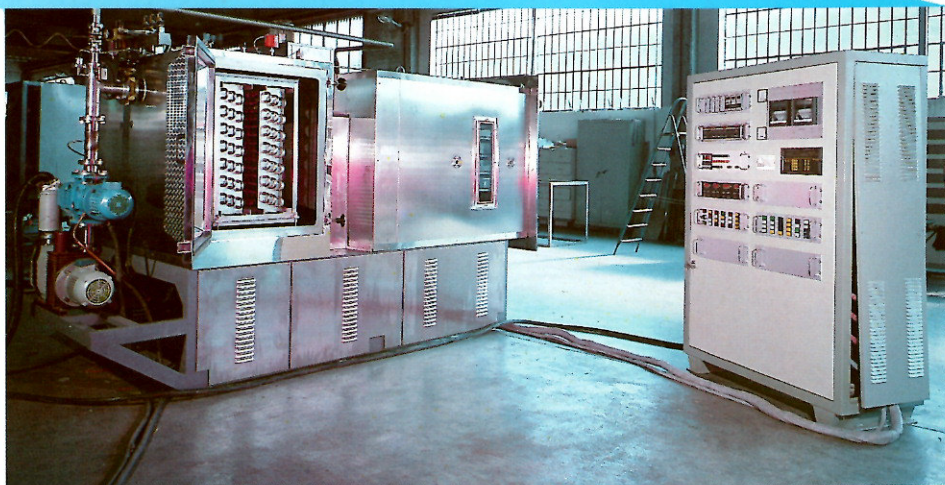


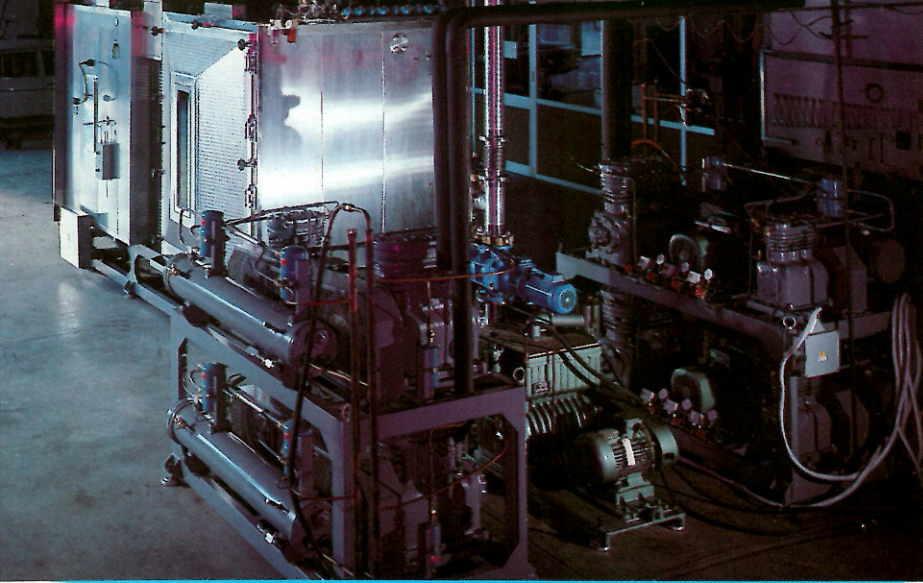
Reparto montaggio
e collaudo
impianti
*Department of
assembling and test
of lyophilizer*



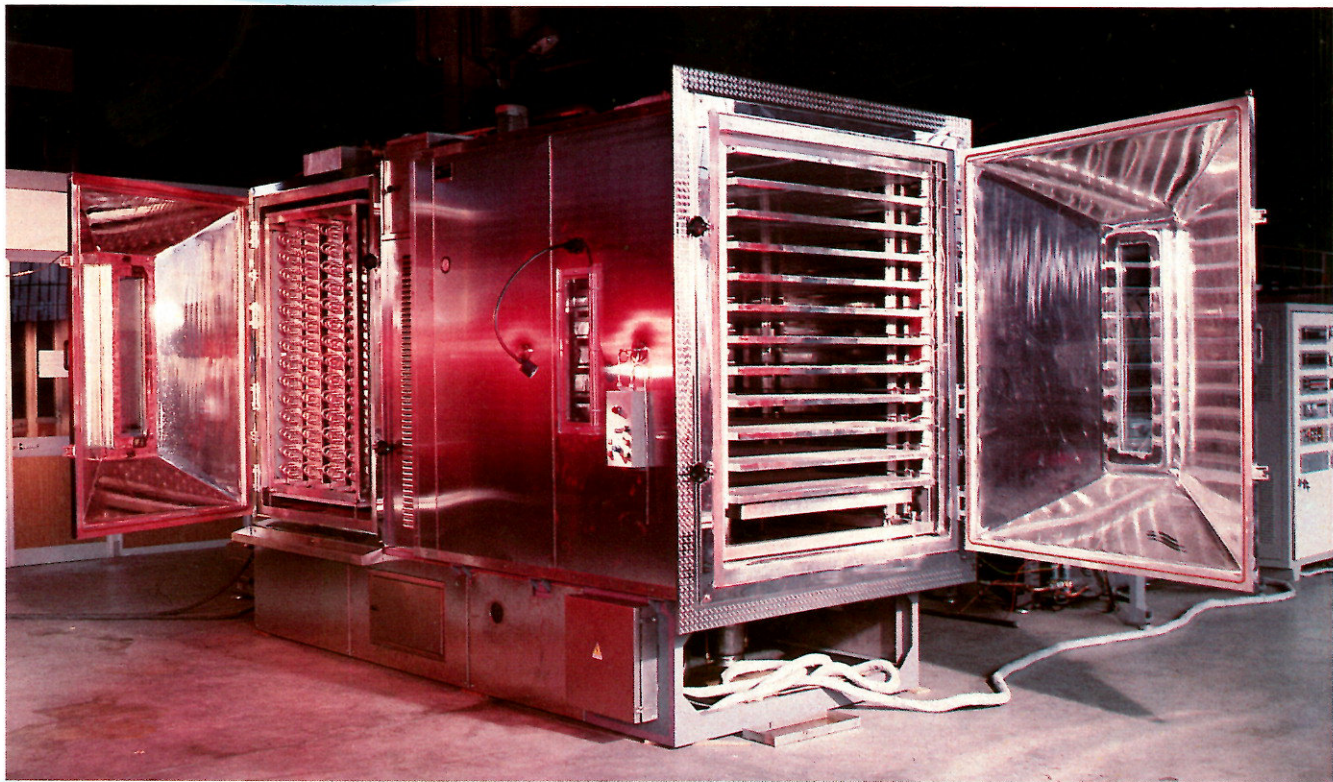
Impianto di
liofilizzazione
per prodotti
con solventi
*Freeze dryer
for products
with solvent*

Camera di
condensazione e
quadro comandi
*Condensing
chamber and
control board*

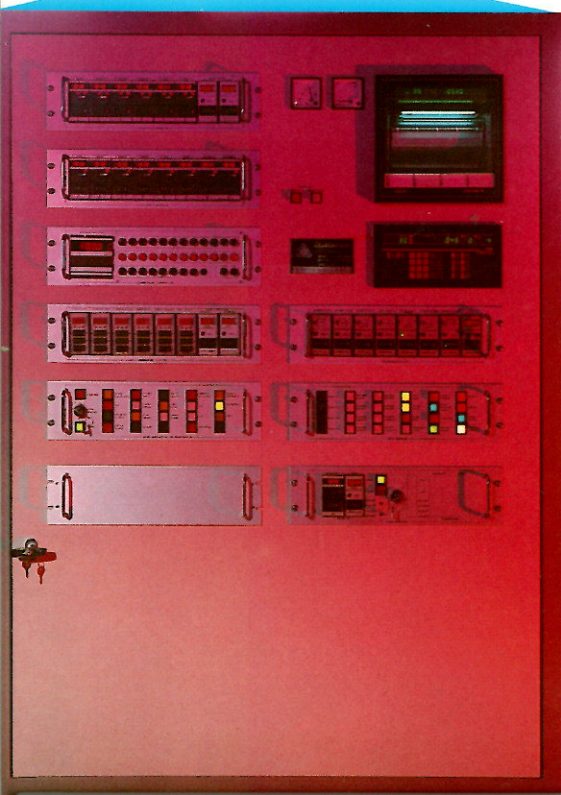




Gruppo vuoto
e frigoriferi
impianto da 600 lt.
*Vacuum and
refrigeration
units of a
lyophilizer, 600 lt.
condensing capacity*

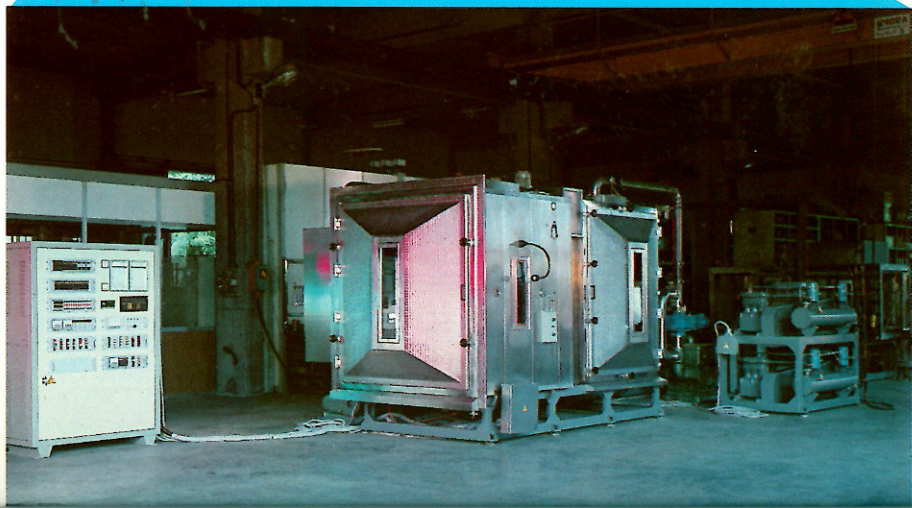


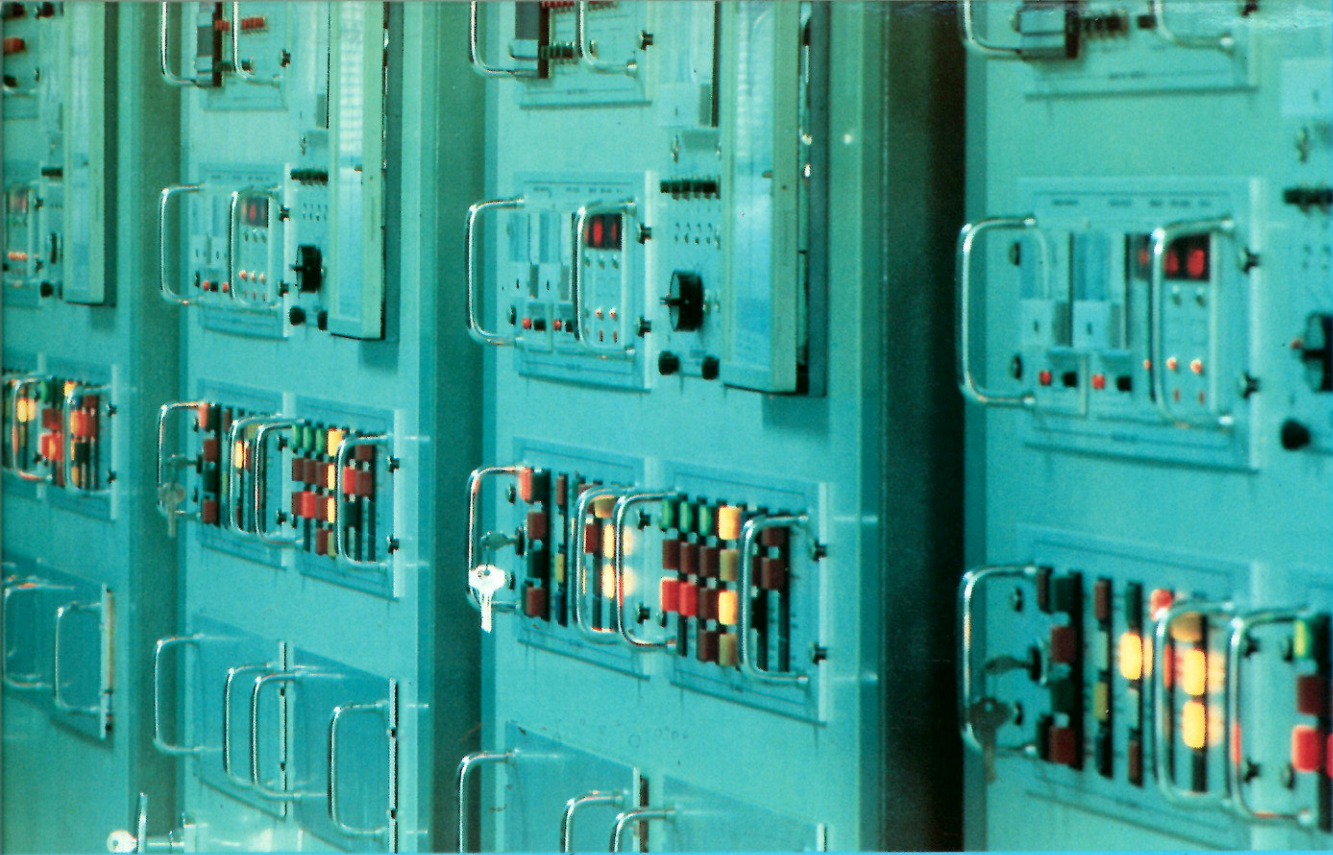
Impianto
con
dispositivo
di
stopping
da 22 mq
*Lyophilizer,
22 sq. m.
surface,
with
stopping
device*



Quadro
gestito
da
micro-
processore
*Control
board
run by
micro-
processor
programmer*

Unità
di
liofiliz-
zazione
completa
*Freeze
dryer
complete
unit,*





Gruppo controllo impianti
General control system of freeze dryers



Impianti lato camera sterile
View from the steril room side of freeze-dryer units